

## SD Video Enhancers by Greentel

Oculen SV-100 is offered in 3 primary types – thermal, fog, and low light

### Oculen SV-100



Front



Back

### Notable Features:

- The primary thermal type is optimized for thermal cameras and provides optimal enhancement of thermal videos deteriorated by fog, rain and other conditions
- The primary fog type is tuned for maximum fog removal and is optimized for enhancing general analog videos deteriorated by fog
- 3D noise reduction filter provides maximum suppression of noise for optimally clear images

**Oculen SV-100 (primary thermal type) enhances in real-time hard-to-see thermal images deteriorated by fog or rain and provides much clearer images for critical monitoring needs.**

## Examples

Before



After



Grass Thicket



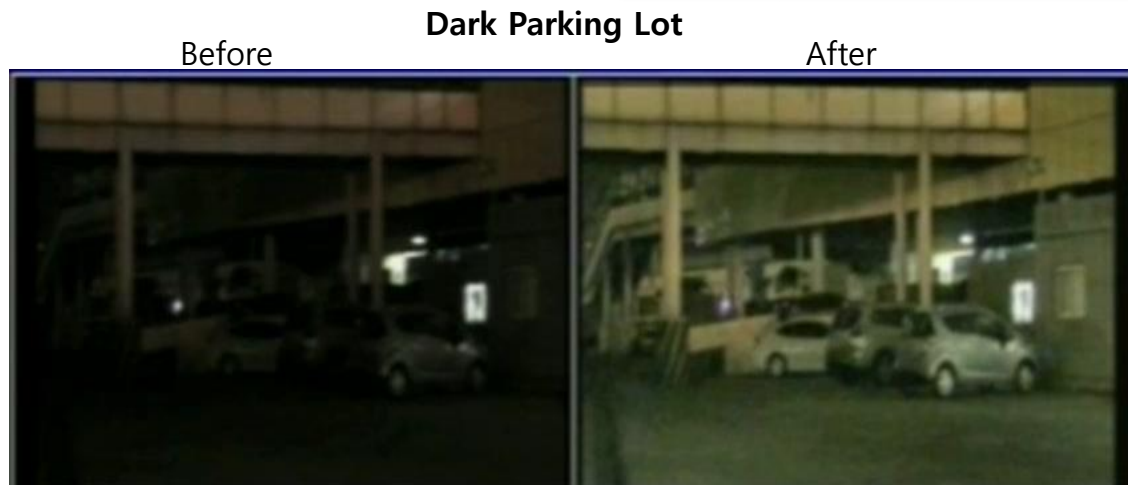
Figure



Water Surface

**Oculen SV-100 (primary fog type, primary low light type) enhances in real-time general analog video images deteriorated by fog, rain and other adverse weather conditions, or low light, backlighting, etc. and provides much clearer images to meet critical monitoring needs.**

## Examples



## SD Video Enhancers by Greentel

Specifically designed to provide maximum defogging, analog video enhancer VM-100 is optimized for sea fog and other heavy fog conditions.

### VM-100



Front



Back

### Notable Features:

- Strongest fog enhancement capability provided with the use of FPGA
- Optimized for discerning large objects in heavy fog
- Provides a variety of enhancement options through support of various modes

With the strongest defogging capability, VM-100 is optimized for viewing large objects hidden by sea fog and is especially favored by users for ship and shoreline monitoring.

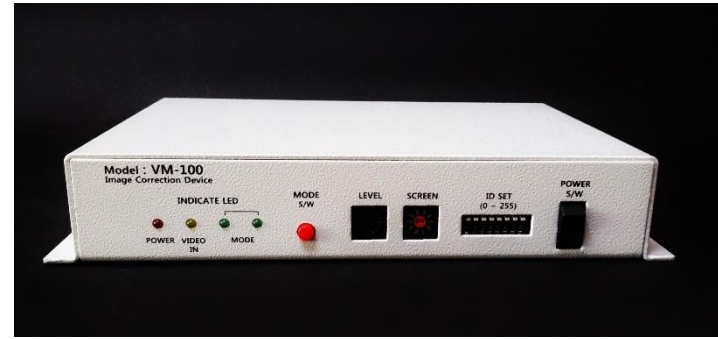
## Examples

### Sea Fog/Heavy Fog





Oculen SV-100



VM-100

## Specifications

	Oculen SV-100	VM-100
Enhancement Levels	16	16
Selectable Screen Area	8 Options	10 Options
Video Input	NTSC/PAL : CVBS 75Ω BNC	NTSC/PAL : CVBS 75Ω BNC
Video Output	NTSC/PAL : CVBS 75Ω BNC	NTSC/PAL : CVBS 75Ω BNC
Maximum Resolution	NTSC : 720x480 / PAL : 720x576	NTSC : 720x480 / PAL : 720x576
Frame Rate	NTSC : 30fps / PAL : 25fps	NTSC : 30fps / PAL : 25fps
Image Delay	Within 100μs/frame	Within 100μs/frame
ID Selection	0~127 (8 bit dip switch)	0~255 (8 bit dip switch)
Power	12V DC/1.0A	12V DC/1.0A
Operating Temperature	0~70 Degrees C	0~60 Degrees C
Operating Humidity	5~90% (Non-Condensing)	20~80% (Non-Condensing)
Indicators	Power/Video In/Factory Setting	Power/Channel Status/Mode
Control Interface	RS-485	RS-485
Dimension	150(W)x42(H)x104(D) mm	203(W)x35(H)x145(D) mm
Weight	360 g	740 g
Case Material	Aluminum	Aluminum